

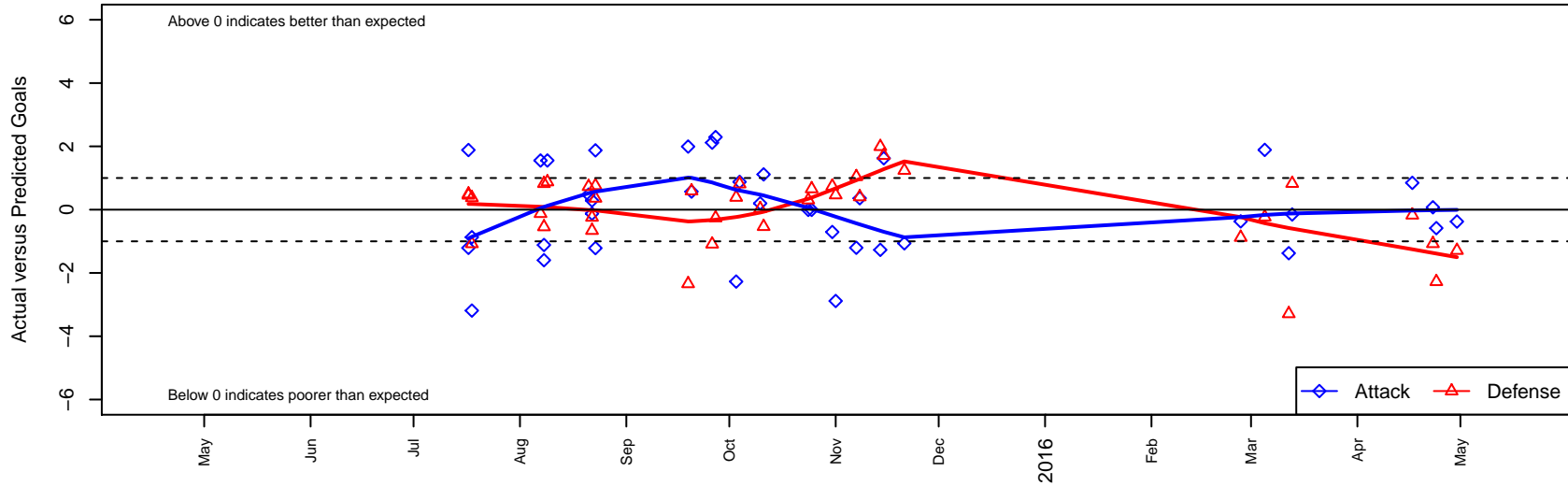
Washington Timbers Forest G03

Washington Timbers
 Vancouver, WA
 G03 total strength=614
 attack=0.7 defense=0.39
 fall league = PTT G03 Div 2 Red
 spr league = Spr OYS G03 Div 1 White

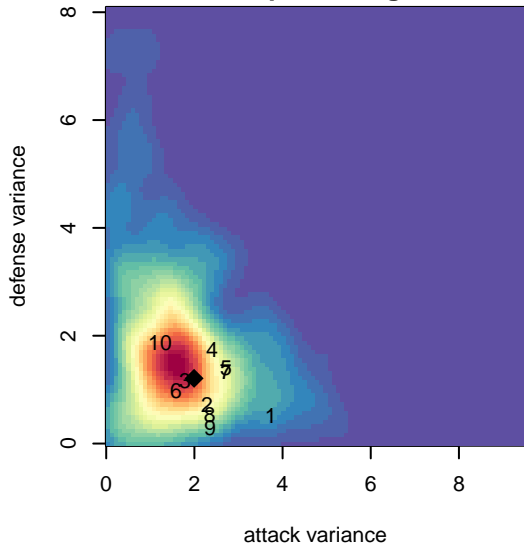
alt names used:
 WTFC G03 Forest
 WASHINGTON TIMBERS FC G03 FOREST (V
 WA Timbers G03 Forest
 WA Timbers G03 Forest
 WA Timbers G03 Forest
 WA Timbers G03 Forest

Venues played:
 2015 Beaverton Cup GU12 Silver
 2015 Bend Premier Cup U12G 9v9 BRONZE U
 2015 Summer Slam U12
 2015 PTT G03 Division 2 Red
 2015 OYS Presidents Cup G03
 2015 Spr OYS G03 Division 1 White

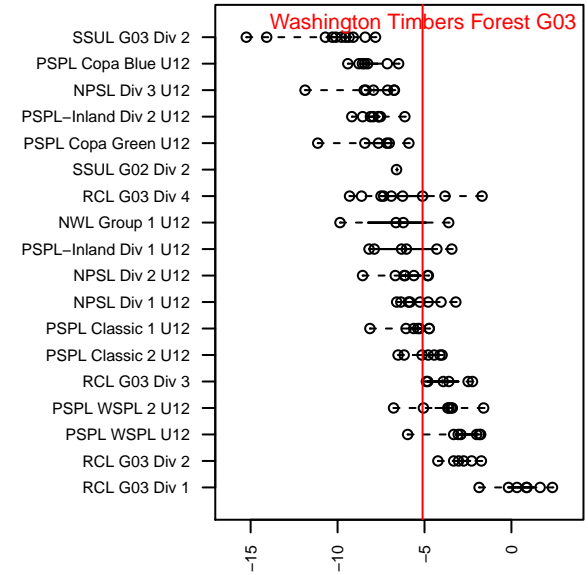
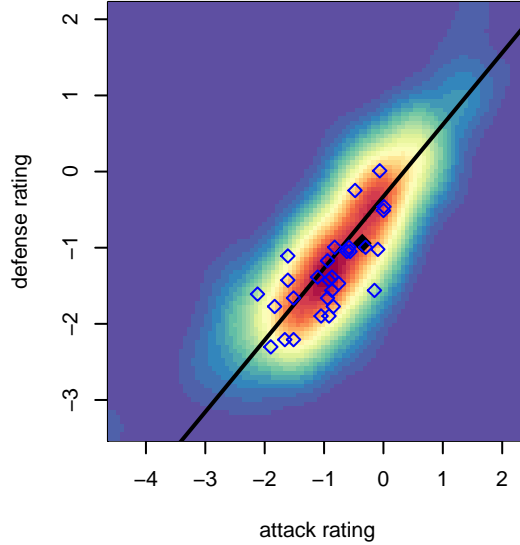
Washington Timbers Forest G03
 Dots are actual minus expected GF (blue circles) and GA (red triangles).
 Blue line is smoothed change in attack strength. Red is smoothed change in defense strength.



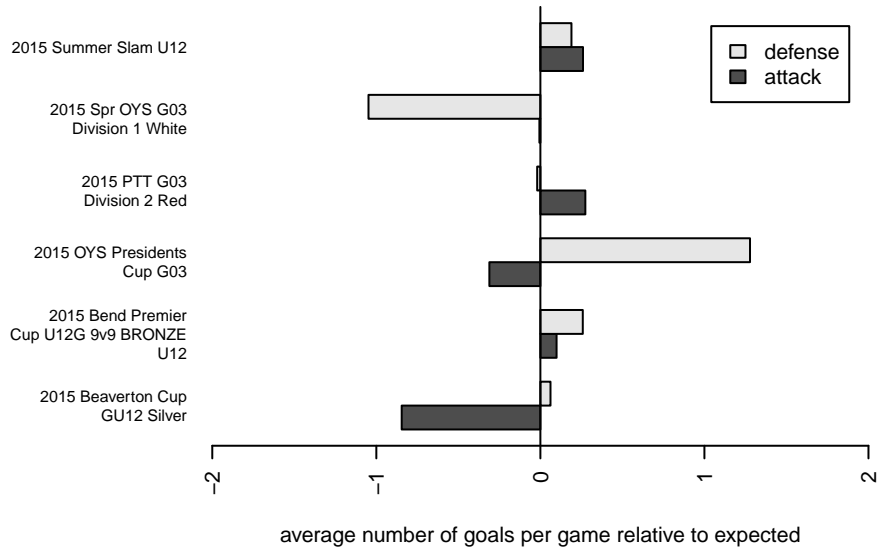
**attack and defense variance (black dot)
relative to other teams
and top 10 in region**



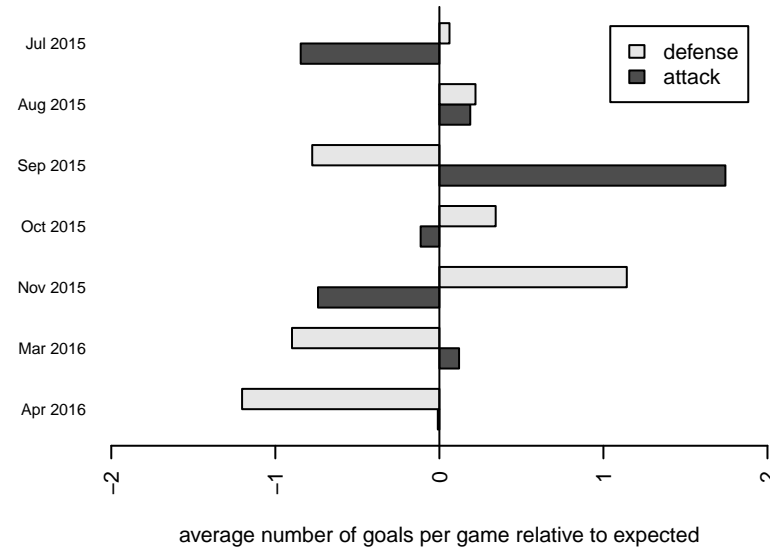
**attack and defense rating
relative to others at age
and all opponents in last 13 months**



Performance relative to 13 month average



Performance relative to 13 month average



date	home		away		venue	pred.home	pred.away
2016-04-30	FC West Revolution Black G03	3	Washington Timbers Forest G03	2	2015 Spr OYS G03 Division 1 White	1.71	2.38
2016-04-24	NEU PDX Blue G03	3	Washington Timbers Forest G03	1	2015 Spr OYS G03 Division 1 White	0.73	1.58
2016-04-23	Washington Timbers Forest G03	2	ETFC Lyon Red G03	2	2015 Spr OYS G03 Division 1 White	1.93	0.93
2016-04-17	Westside Timbers Samba TS G03	1	Washington Timbers Forest G03	3	2015 Spr OYS G03 Division 1 White	0.83	2.15
2016-03-13	Washington Timbers Forest G03	2	Westside Timbers Samba TS G03	0	2015 Spr OYS G03 Division 1 White	2.15	0.83
2016-03-12	Washington Timbers Forest G03	1	FC West Revolution Black G03	5	2015 Spr OYS G03 Division 1 White	2.38	1.71
2016-03-05	Bend FC Timbers White G03	1	Washington Timbers Forest G03	5	2015 Spr OYS G03 Division 1 White	0.77	3.11
2016-02-27	Washington Timbers Forest G03	2	Crossfire OR LOSC Menace G03	2	2015 Spr OYS G03 Division 1 White	2.37	1.12
2015-11-21	Washington Timbers Green G03	0	Washington Timbers Forest G03	0	2015 OYS Presidents Cup G03	1.24	1.06
2015-11-15	Washington Timbers Forest G03	4	FC West Revolution Black G03	0	2015 OYS Presidents Cup G03	2.38	1.71
2015-11-14	Washington Timbers Forest G03	0	BSC Portland Gold-Tiempo G03	0	2015 OYS Presidents Cup G03	1.27	1.99
2015-11-08	NEU PDX Black G03	1	Washington Timbers Forest G03	2	2015 OYS Presidents Cup G03	1.40	1.64
2015-11-07	HSC Revolution G03	0	Washington Timbers Forest G03	1	2015 OYS Presidents Cup G03	1.04	2.20
2015-11-01	Eastside Timbers Black G03	0	Washington Timbers Forest G03	0	2015 PTT G03 Division 2 Red	0.47	2.89
2015-10-31	PCU Black G03	0	Washington Timbers Forest G03	2	2015 PTT G03 Division 2 Red	0.74	2.71
2015-10-25	LYS Cascades G03	0	Washington Timbers Forest G03	3	2015 PTT G03 Division 2 Red	0.66	3.01
2015-10-24	Washington Timbers Forest G03	4	FSC Roses White G03	0	2015 PTT G03 Division 2 Red	4.01	0.30
2015-10-11	Washington Timbers Forest G03	4	Eastside Timbers Black G03	1	2015 PTT G03 Division 2 Red	2.89	0.47
2015-10-10	Washington Timbers Forest G03	4	SESC Lions G03	1	2015 PTT G03 Division 2 Red	3.80	1.03
2015-10-04	Crossfire OR CUSC Black G03	0	Washington Timbers Forest G03	4	2015 PTT G03 Division 2 Red	0.81	3.12
2015-10-03	McMinville MYSA Sparks G03	0	Washington Timbers Forest G03	0	2015 PTT G03 Division 2 Red	0.39	2.27
2015-09-27	Washington Timbers Forest G03	5	PCU Black G03	1	2015 PTT G03 Division 2 Red	2.71	0.74
2015-09-26	THUSC Radium Green G03	2	Washington Timbers Forest G03	5	2015 PTT G03 Division 2 Red	0.91	2.88
2015-09-20	Washington Timbers Forest G03	4	Canby United Venom G03	1	2015 PTT G03 Division 2 Red	3.43	1.59
2015-09-19	Washington Timbers Forest G03	5	LYS Cascades G03	3	2015 PTT G03 Division 2 Red	3.01	0.66
2015-08-23	Washington Timbers Forest G03	2	Washington Timbers Lime G03	0	2015 Summer Slam U12	3.21	0.36
2015-08-23	Westside Timbers Copa White TS G03	1	Washington Timbers Forest G03	3	2015 Summer Slam U12	1.76	1.13
2015-08-22	Washington Timbers Forest G03	7	PSU Titans G03	1	2015 Summer Slam U12	6.71	0.34

ate	home		away		venue	pred.home	pred.av
-08-22	Westside Timbers Copa White TS G03	2	Washington Timbers Forest G03	1	2015 Summer Slam U12	1.76	1.13
-08-21	Three Rivers SC Green District G03	0	Washington Timbers Forest G03	5	2015 Summer Slam U12	0.73	4.53
-08-09	Washington Timbers Forest G03	6	THUSC Radium G03	0	2015 Bend Premier Cup U12G 9v9 BRONZE U1	4.45	0.88
-08-08	Washington Timbers Forest G03	2	Pelada FA Alianza G03	0	2015 Bend Premier Cup U12G 9v9 BRONZE U1	3.60	0.82
-08-08	CSC Storm White G03	1	Washington Timbers Forest G03	5	2015 Bend Premier Cup U12G 9v9 BRONZE U1	0.46	6.12
-08-07	THUSC Radium G03	1	Washington Timbers Forest G03	6	2015 Bend Premier Cup U12G 9v9 BRONZE U1	0.88	4.45
-07-18	PCU Black 2 G03	0	Washington Timbers Forest G03	3	2015 Beaverton Cup GU12 Silver	0.38	6.19
-07-18	Rogue Valley Timbers Red G03	3	Washington Timbers Forest G03	0	2015 Beaverton Cup GU12 Silver	1.92	0.87
-07-17	Washington Timbers Forest G03	8	CSC Storm White G03	0	2015 Beaverton Cup GU12 Silver	6.12	0.46
-07-17	Washington Timbers Forest G03	2	Westside Timbers Mundial TS G03	0	2015 Beaverton Cup GU12 Silver	3.21	0.49